



**WellFirst Health<sup>®</sup>**  
provided by SSM Health Plan

New Member Guide  
Illinois



# Contents

## Getting Started

What Should I Do As a New Member?	4-5
I Have a Health Plan Question or Concern	6
I Have a Medical Question or Concern	6
I Want Wellness Rewards	8-9

## The Basics

I Need to Pay My Premium or Bill	10-11
I Need to Find a Doctor or a Primary Care Provider	12
Where Should I Go for Care?	12-13
I'm Not Sick but I Need Preventive Care	14
What Should I Know About Traveling?	15
I Need to See a Specialist	16-17
I Take Medication or Was Recently Prescribed Some by My Doctor	18-19

## Plan Details

What Should I Do If I've Had Big Changes in My Life?	20
I'm Eligible For Medicare or Have Another Coverage Policy	20
I'd Like to File a Grievance or Appeal	21
What Should I Know About Privacy?	21
Child Appointment Tips/Vaccine Information	22

### Questions about health care services?

Keep the attached magnet  
on your refrigerator!

# We're so Happy You Chose WellFirst Health — Provided by SSM Health Plan

Count on WellFirst Health — Provided by SSM Health Plan — to have your back so you can stay healthy and get the most out of your plan. As a member, you now have access to valuable resources to manage your health and empower you to take control of your care. That means benefits you can understand, tools that save you time and most importantly, support from our friendly staff whenever you need us.

# Knowing the Ins and Outs of Your New Health Plan

It's important to know which network you belong to because your network informs where you can go for care.



WellFirst Health<sup>SM</sup>  
provided by SSM Health Plan

**Member Name**

TEST TEST

TEST TEST 1

TEST TEST 2

TEST TEST 3

**Member #**

012345678901

012345678902

012345678903

012345678904

**Network:** WellFirst ACA  
**Group Number:** XXXXXXXXXXXX  
**Product Type:** HMO  
**wellfirsthealth.com**

**Deductible\*:** Individual \$XXXXX Family \$XXXXX  
**Out of Pocket Max\*:** Individual \$XXXXX Family \$XXXXX  
\*Please refer to your plan materials for your additional financial responsibility.

PCN: 9104 • BIN: 610602

**Customer Care: 866-514-4194(TTY: 711) • Nurse Advice Line: 833-925-0398**

**Get the Right Care:** Your primary care provider (PCP) is the appropriate contact person for routine care needs. Your PCP can assist with providing guidance to the right care.

**Urgent Care / Emergency:** For urgent care center or emergency services, dial 911 or seek immediate medical attention.

For medical needs, seek care at an urgent care center or emergency services, dial 911 or seek immediate medical attention.

For residents only: For care at a location for care. If outside of the Dean PHCS Healthy Directions, WI 53705

of eligibility.

## Your Member ID Card

If you haven't yet received your ID card, it should be on the way!

# Starting a New Health Plan Can be Complicated We Make it Easy

## ■ Step 1: Activate your FREE accounts.

- See pages 6–9 for details
- Schedule appointments, send secure messages to your provider and more through your **MyChart** account.
- Access your plan details, view and pay your premium bill and more through your **Member Portal** account
- Start achieving your goals for a healthy lifestyle and earn rewards along the way through the Living Healthy tile in the member portal

## ■ Step 2: Decide where you'd prefer to receive your primary care.

- Doing this makes it easier to schedule a visit when the time comes that you need one. Just visit **wellfirsthealth.com** to find a primary care clinic near you.

Before you come in for your first visit, it's a good idea to have your medical records transferred from your previous primary care clinic to your new one. Contact your previous clinic to obtain and complete an Authorization to Release Protected Health Information Form. The form allows your previous clinic to send your medical records to your new clinic so your medical team can best continue your care.



We're sharing helpful tips, informative videos and much more. Go to **facebook.com/wellfirsthealth** to join the conversation all year long.



## Additional Member Info

Review important member documents.

- Your **Member Certificate** (sometimes called a “Member Policy”) has information about your plan benefits and coverage, and it lists general limitations and exclusions to your plan
- Your **Summary of Benefits and Coverage** is an easy-to-read grid that lists the details of plan coverage, along with a basic cost estimate of your financial responsibilities for common medical services\*
- Take a moment to review common health plan terms on pages 10–11 so you better understand your coverage and visit your member portal at [wellfirsthealth.com/Account-Login](https://wellfirsthealth.com/Account-Login) for links to these member documents†
- The **Pharmacy Drug Formulary** is a list of prescription drugs that help you understand what is and isn’t covered by your plan

---

### ➤ I have other health plan coverage besides WellFirst Health — Provided by SSM Health Plan.

- Your policy has a Coordination of Benefits (COB) provision – a fancy way of saying we’ll need to sort through situations where you are covered by another company (such as through an employer or Medicare)
- Please let us know by contacting the Customer Care Center. See page 6 for contact details

---

### ➤ I have a chronic condition or a health concern.

- We’re here to support you if you have a serious condition or have a complex health care need
- Visit [wellfirsthealth.com/livinghealthy](https://wellfirsthealth.com/livinghealthy) and click on “Complex Case Management” to learn how we can help, or contact the Customer Care Center

\* Your financial responsibilities may come in the form of a copay, coinsurance or deductible. The terms stated in these documents may change at your annual policy renewal, and we would send you an outline of any changes at that time.

† These documents are also available by contacting the Customer Care Center to request copies be mailed to you. See page 6 for contact details.

# Health Coverage Support is Just a Tap or Click Away

You shouldn't have to be a rocket scientist to figure out health coverage. We offer innovative tools to help you sort through all your information. And if you need a little help along the way, we're standing by.



## Member Portal

Manage your health plan information with your secure and convenient Member Portal account.

- View your plan details
- Request member ID cards or download a digital copy
- Change your primary care clinic
- Review past claim details
- View and pay your premium bill and more

Visit **[wellfirsthealth.com/Account-Login](https://wellfirsthealth.com/Account-Login)** and use your member number from your ID card to activate your account.



## Customer Care Center

Our friendly Customer Care Specialists are here to turn health coverage confusion into clarity.

- Get answers to benefit and coverage questions
- Figure out what your financial responsibility is for a bill
- Learn the details about a provider

**866-514-4194 (TTY: 711)**

Monday – Thursday, 7:30 am – 5 pm  
Friday, 8 am – 4:30 pm

Visit **[wellfirsthealth.com](https://wellfirsthealth.com)** and send us a message.

---

**24-Hour Nurse Advice Line**  
Save our number in your phone!  
**833-925-0398**

# Health Care Support is Always at Your Beck and Call

**Time is precious.** That's why we offer technology so you can keep tabs on what's most important – your health. When health concerns come up, call our nurses for real insight into your specific situation instead of generalities found on various internet sites.



## **SSM Health Express Virtual Care E-Visit**

Get help for common illnesses like flu or sinusitis by connecting to a local provider via smart phone or computer. Only certain conditions qualify for a Virtual Care E-Visit. Visit [wellfirsthealth.com/evisit](https://www.wellfirsthealth.com/evisit)



## **MyChart**

Manage your medical world – all from a computer or smart phone. MyChart is designed for the way you live today.

- Send and receive secure messages with your primary care provider
- Schedule appointments
- Get lab results
- Request prescription refills and more
- View and pay your medical bill

Visit [wellfirsthealth.com/mychart](https://www.wellfirsthealth.com/mychart) to activate your account. Some features of MyChart may not be available at all primary care clinic locations.



## **24-Hour Nurse Advice Hotline**

Take the guesswork out of getting the health care you deserve. A nurse is ready to help 24/7/365.

- Talk with an experienced registered nurse from SSM Health
- Get help figuring out where to go for care
- Get answers to your health-related questions or concerns

Call **833-925-0398**. Save our number in your phone so you can call us anytime.



## **Health Pandemics**

If and when epidemics happen, WellFirst Health — Provided by SSM Health Plan — will make every effort to provide up to date information. For Coronavirus (COVID-19) updates, please visit [wellfirsthealth.com/coronavirus](https://www.wellfirsthealth.com/coronavirus)

# Achieve Your Goals and Earn up to \$150

For more information visit

[wellfirsthealth.com/wellness](https://wellfirsthealth.com/wellness)

We believe that with the right tools, information and motivation, you can achieve your goals for a healthier lifestyle on your own terms. That's what Living Healthy is all about. Visit [wellfirsthealth.com/livinghealthy](https://wellfirsthealth.com/livinghealthy) to create your personalized Living Healthy portal account today.



LivingHealthy  
POWERED BY WebMD health services

## ■ Living Healthy Rewards\*

Living Healthy Rewards 2022 will focus on Preventive Health Services! Prevention or early detection of common diseases is the best way to be the healthiest you. The list below includes some of the more common preventive and screening services proven to improve health, but it is important to check with your primary care provider to determine which tests are appropriate for you, based on your medical history and family history. Earn points for taking care of you!

- Immunizations: Influenza, Varicella, Tetanus, Meningococcal and Pneumococcal
- Cancer screenings: Mammogram, Colon Cancer (FIT testing, Cologuard, Colonoscopy) and PAP smear
- Other screenings: Chlamydia, Gonorrhea, HIV, Hepatitis C, Diabetes and Depression

### Here's how it works:

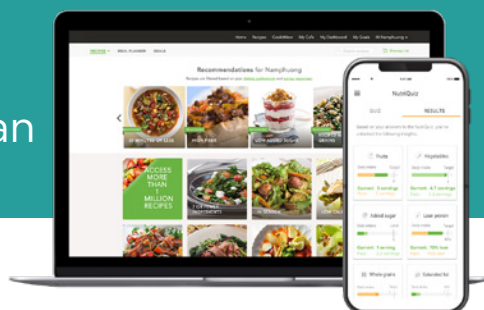
- Choose the healthy activities you want to complete
- Each completed activity is worth reward points
- Earn up to 1,500 points for a maximum of \$150 per calendar year
- Get your reward in the form of gift cards to your choice of many national retailers, restaurants and other popular merchants
- All rewards must be redeemed before December 31, 2022

\* You must complete the online health assessment in order to earn reward points for other healthy activities. Only WellFirst Health — Provided by SSM Health Plan — members, ages 18 and older, are eligible for Living Healthy rewards. Covered adult children can earn up to \$100 per year for completing healthy activities.



# foodsmart and WellFirst Health

— Provided by SSM Health Plan



## ■ Personalized Digital Nutrition

Do you want to eat healthier but feel you don't have the time or energy for the planning, shopping and preparation that's involved? You're not alone, which is why we teamed up with Foodsmart to offer you and your family a free program that makes it easier to eat well. With Foodsmart, you can benefit from personalized recipes, powerful meal-planning tools, grocery discounts and more to help you be a healthier you.

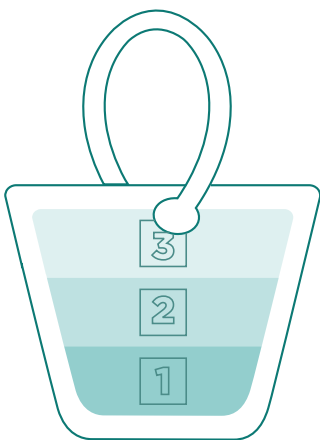
- **Get recipes just for you**  
Access recipes personalized to your dietary preferences, including quick meals based on ingredients in your kitchen right now.
- **Make meal planning quick, easy and done**  
Save time and stress with a digital meal planner, easy grocery list and, if you'd like, home delivery through Amazon Fresh, Walmart and Instacart (varies by location).
- **Score fresh new deals**  
Save money with great discounts on healthy foods at your favorite local grocery stores.

Download the Foodsmart app from the Apple App Store or Google Play Store, or visit [wellfirsthealth.com/foodsmart](https://wellfirsthealth.com/foodsmart) to sign up.



# Health Coverage 101: How Your Health Plan Works

We provide you with tools to learn where your health care dollars go, and we try to make it as easy as possible to understand your financial responsibilities.\* Your policy may use a system of cost sharing that can include a copay, coinsurance, deductible or any combination of the three.



1

## DEDUCTIBLE

Each time you receive medical services, you'll pay the bill towards these services up to a certain amount. This amount is your deductible, which is what you must pay for covered health care services each year before we begin to pay.

2

## COINSURANCE<sup>†</sup>

Once you've paid the deductible amount, your plan will then start splitting the cost of additional medical services with you. This is known as coinsurance, where you only pay a percentage or part of the total cost of services and we'll pay the rest.

**Deductible and Coinsurance Limit** – There's a dollar limit to the amount you'll pay towards your deductible and coinsurance.

3

## COPAYS

A copay is a fixed dollar amount, which you pay at the time you receive medical services (for things like an office visit) and prescriptions. All your copays add up toward your Maximum Out-of-Pocket total.

**Maximum Out-of-Pocket** – There's a dollar limit to all your cost sharing. You reach this amount by means of your deductible, plus your coinsurance, plus your copays. Once this limit is reached, you'll pay nothing on subsequent covered medical charges for the remainder of your policy year.

**Premium** – the amount you pay each month to access your health coverage.

\* Not all of the cost-sharing terms listed here apply to all members. Refer to your Member Policy document to understand which apply to you.

<sup>†</sup> Coinsurance is your share of the costs of a covered health care service. It's calculated as a percent of the allowed amount for the service.

## Payments and Claims

### How can I get a cost estimate for services?

Check your Member Policy document for details about common medical services. You may also visit [wellfirsthealth.com/members/cost-estimator](https://wellfirsthealth.com/members/cost-estimator) for three tools that estimate physician, facility and pharmacy costs.

### I need to make a payment.

**For plan premiums:** You can pay your plan premiums online or by mail. Visit [wellfirsthealth.com/billpay](https://wellfirsthealth.com/billpay) to learn more.

**For medical bills:** When you are seen at a clinic location for services, you may pay a copay when you check-in. SSM Health will send you a bill for any copay charges not paid at the time of service or any deductibles and coinsurance for which you are financially responsible. You can pay your bill online through your MyChart account or mail your payment (check or credit card info) with the enclosed payment form. Visit [wellfirsthealth.com/billpay](https://wellfirsthealth.com/billpay) to learn more.

### I received an Explanation of Benefits (EOB). Is this a bill?

The EOB is not a bill. You'll receive an EOB when you use your health plan for a covered service. The EOB lists the services used, amount charged by the provider and your financial responsibility to pay toward deductibles or coinsurance. Log in to Member Portal to see your past EOBs at [wellfirsthealth.com/Account-Login](https://wellfirsthealth.com/Account-Login)

### I need to submit a claim.

Claims are usually sent directly to WellFirst Health — Provided by SSM Health Plan — by providers or clinics. Sometimes — if you're traveling out of the area or have a college-age dependent, for example — it may be necessary for you to submit a claim for reimbursement. Visit [wellfirsthealth.com](https://wellfirsthealth.com) and search the phrase: "member paid claim reimbursement form." Be sure to follow these guidelines:

- Send an itemized bill from the provider of service. If services were received outside of the U.S., you will need to submit the original bill along with an itemized bill that has been translated into English and indicate the appropriate currency exchange rate at the time the services were received.
- Send the bill within 60 days (up to 12 months are allowed) after the services are received to:

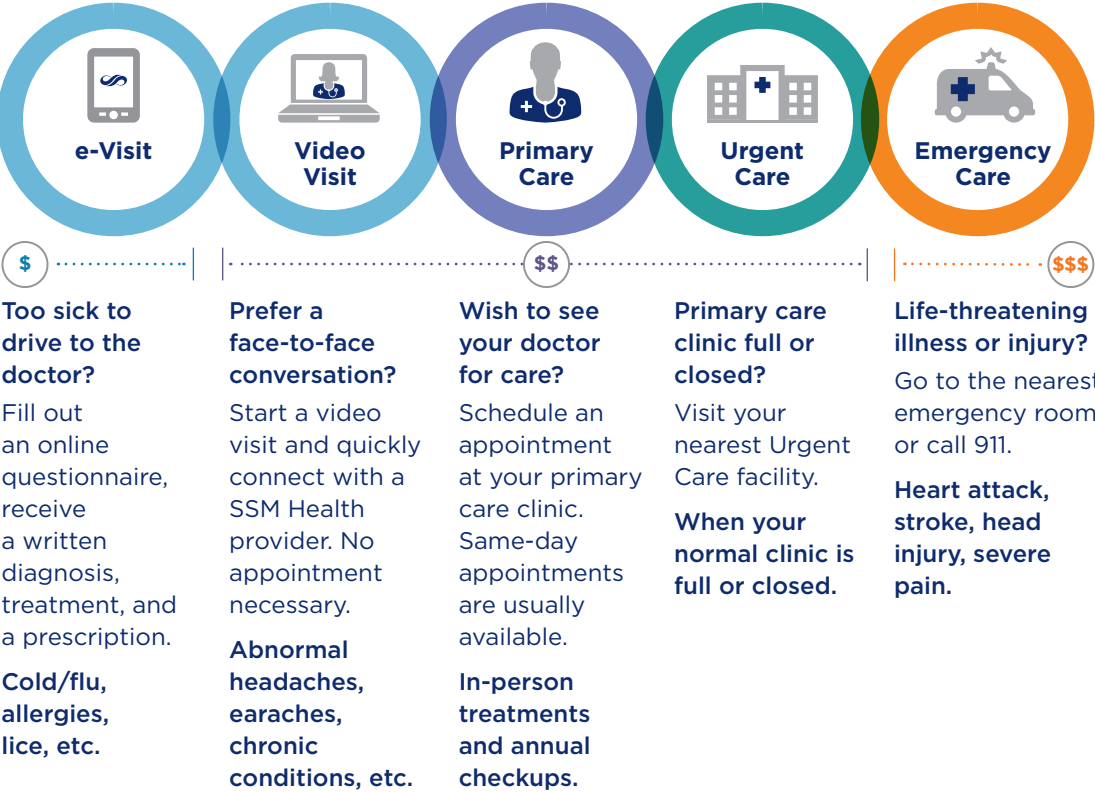
**WellFirst Health —  
Provided by SSM Health Plan  
Attn: Claims Department  
PO Box 56099  
Madison WI 53705-9399**

- If you have another coverage company that is the primary payer, you will need to send the Explanation of Benefits to WellFirst Health — Provided by SSM Health Plan — or your health care provider.

# Where to Go for Care

## The Right Care for Your Needs

Knowing your care options before you need them saves you time and money.



SSM Health Express  
Virtual Care Options

Learn more at  
[wellfirsthealth.com/rightcare](http://wellfirsthealth.com/rightcare)

# The Best Relationships Include a Healthy Dose of Trust

We know health care is a very personal – and at times, an intimidating – experience. That’s why our Care Teams work so hard to earn and keep your trust. No judgments. Just compassion.



## Primary Care Provider (PCP)

Your Care Team is committed to working with you to build a relationship of trust. Trust combined with their training and experience means you have true health advocates who care. **Your care team:**

- Consists of your primary care providers
- Provides care for a wide range of preventive and long-term health care
- Helps you stay healthier with regular visits, immunizations and screenings
- Handles your immediate care needs
- Coordinates needed specialist care
- Coordinates your health care with other medical experts

Visit [wellfirsthealth.com/doctors](https://www.wellfirsthealth.com/doctors) to search our online provider directory for an available primary care provider. You can filter your search so you only see providers in your network. Then select a provider to learn about his or her education, specialty, certification and more.



## SSM Health Express Clinics

Need to see an SSM Health provider in-person, but you can’t make it to your primary provider’s office? Visit an SSM Health Express Clinic at Walgreens locations across the St. Louis area.

Walk in or schedule an appointment online and avoid the wait:  
[wellfirsthealth.com/schedule](https://www.wellfirsthealth.com/schedule)



## Coordinated Care

We are a part of an integrated delivery network with SSM Health, which unites physician, hospital and health plan solutions to reduce health care costs, improve quality and deliver a better member and patient experience for you.

# Getting Sick Happens. Staying Healthy? We Help Make That Happen Too

We do more than pay the medical bill. At the heart of our preventive care philosophy is a promise that you'll get the support you need to remain as healthy as possible and help prevent disease.



## Annual Preventive Visit

This type of visit can bring to light health concerns so they can be addressed before they get worse. That's what preventive care is all about.

- Allows your primary care provider to get to know you and your health care needs
- Helps you prevent or manage illnesses, diseases or other health problems
- Includes important preventive services, such as patient counseling, referrals to specialists and recommendations for other preventive care to get (see below for examples)



## Preventive Care\*

In addition to an Annual Preventive Visit for all ages, we encourage and cover:

- Immunizations - doses and age-specific vaccines vary
- Screenings for breast, cervical and colon cancer
- Annual Sexually Transmitted Infection (STI) counseling for adults and adolescents
- Cholesterol screening for all ages and more

Visit [wellfirsthealth.com/preventivecare](https://wellfirsthealth.com/preventivecare) for a complete list of covered preventive services.

\* Information presented here is meant to supplement – not replace – the advice and care of health care professionals. To see your specific preventive care coverage details, please review your Member Certificate (sometimes called a “Member Policy”) and Summary of Benefits and Coverage documents. Details for covered preventive services may change.

For coverage questions, contact the Customer Care Center. See page 6 for contact details.

# Traveling?

## Here's What You Need to Know

You don't need to take health plan coverage worries with you on your vacation. We have you covered for urgent and emergency care worldwide.



- We'll cover services provided in an urgent care facility and/or emergency room while you're out of the WellFirst Health — Provided by SSM Health Plan — service area, subject to policy copayments, coinsurance, deductibles and maximum allowable fees. No referral or prior authorization needed. If you are unable to get to an in-network plan provider, please go to the nearest urgent care or emergency center for treatment.

**Please notify us as soon as possible by calling the Customer Care Center at 866-514-4194 (TTY:711).**

- An in-network provider should resume all follow-up care. If you are out of the area and not able to see an in-network plan provider, call your primary care provider to discuss the urgent/emergent services you received and the recommended follow-up with an out-of-network provider. You must have an approved prior authorization for services to be covered. Your primary care provider will submit a request for medically necessary services with the out-of-network provider.



### **Need a Ride to See Your Provider?**

**No problem! Your ride. Our cost.** At WellFirst Health — Provided by SSM Health Plan — we know that getting access to care when you need it is important. That's why we have partnered with Lyft to do the driving.

To support our members in managing their health, we are offering our individual and family plan\* members a free ride to and from any medical appointments with their providers during clinic hours.

For more details and to schedule your ride, call our Customer Care team at **866-514-4194 (TTY: 711)** or visit **[wellfirsthealth.com/lyft](https://wellfirsthealth.com/lyft)**

\*Individual and family members who use Lyft transportation will need access to the Lyft mobile app on a smart phone, and have an account to set up their rides. To set up an account with Lyft, download the app from the App Store or Google Play, or visit Lyft's website to sign up today. Lyft is taking extra precautions during the COVID-19 crisis; review their guidelines before scheduling.



# Specialty Care is Everywhere When You Need it

In addition to primary care providers, our network includes a variety of medical specialties. Your primary care provider can help you find the specialist who is right for you.



## Specialty Care 101

Talk with your primary care provider if you think you need to be seen by a specialist.

- Examples of specialty care include physical therapy, podiatry, chiropractic services and dermatology
- There are many specialists affiliated with WellFirst Health — Provided by SSM Health Plan — including but not limited to SSM Health
- You should be seen by a specialist within the WellFirst Health — Provided by SSM Health Plan — network of providers

Visit [wellfirsthealth.com/doctors](https://www.wellfirsthealth.com/doctors) for a comprehensive list of our specialty providers, behavioral health services and hospitals.



## Prior Authorization

Certain medical services or specialty care services from a specialty provider might require you to get prior authorization.\*

- A good rule to remember is that any time you seek services with an out-of-network provider, you will need to get prior authorization unless your benefit plan includes an out-of-network option
- We require prior authorization so our medical management team can review the medical necessity of the recommended service or visit and make sure you are getting appropriate care unless your benefit plan includes an out-of-network option

\* A prior authorization can only be obtained for services that are covered under your plan benefits. For example, if bariatric surgery isn't covered in your policy, prior authorization will not change the policy to cover it. If the services are covered under your plan, they remain subject to a decision regarding medical necessity and any applicable cost sharing (e.g., copays, coinsurance or deductibles).



## Have a question?

Contact the Customer Care Center.†  
866-514-4194 (TTY: 711)\*

## Do I Need Prior Authorization?

My PCP (or other in-network provider) recommended I visit a specialist:



WellFirst Health®

I have a WellFirst Health Plan

### In-Network

**You don't need to do anything.** Although the service may require a prior authorization, it is up to your in-network provider to get prior authorization for you.

### Out-of-Network

**Yes, you need to get prior authorization to see an out-of-network provider.** Discuss this with your plan physician and he or she will submit an authorization to the health plan if the services are not available with plan providers. We'll then review the request and provide a written decision to both you and the referring provider within 15 calendar days from receipt. Make sure you wait until you receive this approval before receiving the recommended services to avoid any unnecessary fees.

---

For a plan-specific list of services that require a prior authorization, please visit [wellfirsthealth.com/member-benefits](https://wellfirsthealth.com/member-benefits)

† If the Customer Care Center is unable to address your authorization concerns, you will be connected to the Care Management Department. If you have an urgent need outside of business hours, leave a message with the Customer Care Center and your call will be returned within one business day.

# Getting the Most From Your Drug Benefit

Convenience and member affordability are the name of the game when it comes to WellFirst Health — Provided by SSM Health Plan — pharmacy services. We're here to help you manage your prescriptions and lower your expenses.



## Costco Pharmacy

Our Preferred Mail Order Pharmacy

Interested in having your prescriptions delivered? You can order all your prescriptions through the Costco Pharmacy! A Costco membership is not needed to use their mail order pharmacy.

To switch to Costco, members will need to register with Costco Mail Order Pharmacy. They can register by visiting **pharmacy.costco.com** and clicking "Sign In/Register."

You will also need your prescriber to submit new prescriptions to Costco.

For more information about our Mail Order Pharmacy program, contact our Customer Care Center at **866-514-4194 (TTY: 711)**.



## Specialty Pharmacy

Medications for many chronic and complex health conditions can be hard to manage. Lumicera, our Specialty Pharmacy, works with you and your provider to help you to manage your condition and to make sure you receive the best care possible. We offer free delivery, same-day service, refill reminders, financial assistance and more.

\* Mail-order delivery service is not available to all members. Refer to your Summary of Benefits and Coverage document or contact the Customer Care Center. See page 6 for contact details.



Find a pharmacy location near you:

[wellfirsthealth.com/pharmacy](https://wellfirsthealth.com/pharmacy)



## Drug Formulary & Management Procedures

We use a drug formulary, which is a list of prescription drugs that helps you understand what is and isn't covered. Our drug formulary breaks the list into different tiers. The tiers are organized by the level of cost sharing between you and the health plan. The drug formulary is reviewed every month and updated on a regular basis. For example, we update the drug formulary when a new generic drug is approved. There are restrictions to and procedures for your coverage in order to help keep plan costs down.

Restrictions to and procedures for your prescription coverage mean you may only receive drugs listed on our drug formulary (closed formulary). Certain drugs may have specialist restrictions or require you to visit a specialty pharmacy. You may also be required to have prior authorization, mandatory generic substitution, step therapy and quantity level limits for certain drugs. Be familiar with your plan's specific coverage details and visit [wellfirsthealth.com/pharmacy](https://wellfirsthealth.com/pharmacy) to review our drug formulary, along with general limitations and procedures.

# We Can Help Make Changes to Your Plan



## Special Enrollment

We understand that sometimes big events happen in your life and it means you need to make a change to your coverage with WellFirst Health — Provided by SSM Health Plan. You can make changes to your plan outside of the designated open enrollment period (whether you purchased coverage on or off the Health Insurance Marketplace), but only if you have a qualifying event that would trigger a special enrollment period.\*

Please review our special enrollment page at [wellfirsthealth.com/specialenrollment](https://www.wellfirsthealth.com/specialenrollment) for more information on qualifying event requirements.

## Let us know if you have other coverage or Medicare.

Do you have health coverage in addition to your coverage through WellFirst Health — Provided by SSM Health Plan? When you have coverage through more than one source, we have to determine in what order claims will be paid, referred to as coordination of benefits. It is especially important that you notify us when you are eligible for Medicare. When you are eligible for Medicare, WellFirst Health — Provided by SSM Health Plan — processes your claims as if you are enrolled in Medicare, even if you choose not to enroll in Medicare Part A and/or B. This will result in you paying out-of-pocket for services that Medicare would have covered. For this reason, we strongly suggest that you enroll in Medicare Part A and B as soon as you are eligible.†

We're here to help you sort it all out. If you are enrolled in Medicare or have questions about Medicare, please contact the Medicare Coordination of Benefits Specialist at **608-827-4189 (TTY:711)**. To report additional coverage other than Medicare, please call the Customer Care Center at **866-514-4194 (TTY:711)**.

\* Special enrollment periods, which were created by the Affordable Care Act (ACA), give consumers a limited time period after a qualifying event to purchase new individual health insurance or make changes to an existing policy, like adding a dependent or changing plans.

† You are Medicare-eligible if you are a legal U.S. resident and one of the following applies to you:

- You are age 65 or older
- You are any age and have a qualifying permanent disability
- You are any age and have been diagnosed with end-stage renal disease (ESRD)

# Member Information

## Member Rights & Responsibilities

You deserve the best service and health care possible. Rights and responsibilities help foster cooperation among members, providers and WellFirst Health — Provided by SSM Health Plan. Visit [wellfirsthealth.com/member-rights](https://wellfirsthealth.com/member-rights) to view all of your member rights and responsibilities.

## Grievance & External Independent Review Rights

We know that at times you may have questions and concerns about benefits, claims or services you have received from WellFirst Health — Provided by SSM Health Plan. When a question or concern arises, we encourage you to reach out to our Customer Care Center. Our Customer Care Specialists will make every effort to resolve your concern promptly and completely. Your input matters, and we encourage you to call with any concerns you may have regarding your health care. If after contacting us, you continue to feel a decision has adversely affected your coverage, benefits or relationship with WellFirst Health — Provided by SSM Health Plan — you may file a grievance or appeal.

Visit [wellfirsthealth.com/appeals](https://wellfirsthealth.com/appeals) for details on how to file or for more information about these procedures. You may also find information in your Member Certificate or Summary. Contact the Customer Care Center with any questions about the process. *See page 6 for contact details.*

## How to Submit a Complaint

If you have a complaint, please contact our Customer Care Center at **866-514-4194 (TTY:711)**. We will document and investigate your complaint and notify you of the outcome. For more information, visit [wellfirsthealth.com/appeals](https://wellfirsthealth.com/appeals)

## Terms & Conditions

All your benefits are subject to terms and conditions as described in your Schedule of Benefits and in your “Member Policy.” Please refer to these important documents for complete details.

## Drugs and New Medical Technology

Each year, we evaluate new and existing medical technology to determine if any updates to medical policies are needed. Drugs covered under your pharmacy benefit are also reviewed by a WellFirst Health — Provided by SSM Health Plan — medical director and pharmacists from SSM Health System and Navitus Health Solutions. WellFirst Health — Provided by SSM Health Plan — follows the review process set forth by the National Committee for Quality Assurance (NCQA) any time there is a new product or process. Based upon the results of the technology assessment, WellFirst Health — Provided by SSM Health Plan — will revise its medical policies if necessary.

## Privacy & Confidentiality

WellFirst Health — Provided by SSM Health Plan — is required by law to maintain the privacy of your personal health and financial information (collectively referred to as “nonpublic personal information”) and provide you with written notification of our legal duties and privacy practices concerning that information.

Please visit [wellfirsthealth.com/privacy](https://wellfirsthealth.com/privacy) or call **866-514-4194 (TTY:711)** to request a copy.

# Child Appointment Tips and Vaccine Information



When it comes to medical appointments for your child, a few minutes of preparation can make a **big** difference.

## ■ Helpful Tips

Here are some helpful tips for you and your child to have a successful experience with your child's Primary Care Provider.

- Be honest and tell your child what to expect. For example, you could say that immunizations will hurt, but only for a minute or so.
- Use a toy or musical instrument to distract your child during shots or other uncomfortable moments. Let them know it's okay to cry.
- Talk with other people who know your child well, such as a grandparent or caregiver, and ask if they have any health concerns

## ■ Do you or your child need to catch up on any vaccines?

Visit [cdc.gov/vaccines/schedules](https://cdc.gov/vaccines/schedules) to view the Catch-Up immunization Schedule and learn more about vaccines. To learn more about important immunizations and to check which vaccines your family members have received in the past, visit the Missouri Immunization Registry at [health.mo.gov/living/wellness/immunizations](https://health.mo.gov/living/wellness/immunizations)

## ■ Are you in need of a COVID-19 vaccine?

Schedule yours today at [ssmhealth.com/access/covid19-vaccine-scheduling](https://ssmhealth.com/access/covid19-vaccine-scheduling)

For more information, visit

[wellfirsthealth.com](https://wellfirsthealth.com)



We're so happy you chose  
**WellFirst Health —**  
Provided by SSM Health Plan!



PO Box 56099  
Madison WI 53705-9399



**WellFirst Health®**  
provided by SSM Health Plan

---

Follow us on Facebook  
and leave us a Google review



**WellFirst Health — Provided by SSM Health Plan**  
**P.O. Box 56099 | Madison, WI 53705-9399**  
**866-514-4194 (TTY: 711) | [wellfirsthealth.com](http://wellfirsthealth.com)**

WellFirst Health — Provided by SSM Health Plan — does not discriminate on the basis of disability in the provisions of programs, services or activities. If you need this printed material interpreted or in an alternate format, or need assistance in using any of our services, please contact a Customer Care Specialist at 866-514-4194 (TTY: 711).